

# Shutdown Wizard

Installation Guide

Version 2.0

# Table of Contents

<b>1. Introduction</b> .....	<b>1</b>
<b>2. Shutdown Wizard Install, Quick Start, Exit and Uninstall</b> .....	<b>1</b>
2-1. System Requirement .....	1
2-2. Software Install .....	2
2-3. Start up .....	6
2-4. Configuration .....	6
2-5. Exit .....	7
2-6. Un-installation .....	7
<b>3. Shut down the system</b> .....	<b>8</b>
3-1. Integrated with ViewPower.....	8
3-2. Integrated with ViewPower Pro.....	9
3-3. Integrated with SNMP Web Pro.....	11
3-4 Linux non-root user password setting.....	12

# 1. Introduction

Integrated with ViewPower, ViewPower Pro or SNMP Web Pro software, ViewPower shutdown wizard is a highly specialized and designed tool to perform shutdown task. It will activate UDP service through port no. 31234 & 41234 to accept shutdown command to shut down local PC from remote system with ViewPower or ViewPower Pro installed.

## 2. Shutdown Wizard Install, Quick Start, Exit and Uninstall

### 2-1. System Requirement

- 256 MB physical memory at least (512 MB is recommended)
- 200MB hard disk space at least
- Administrator authority is required
- More than 16-bit colors and 800 x 600 or above resolution display is recommended
- TCP/IP protocol must be installed for network management
- Platforms supported by software are listed below:
  - Windows Server 2012 / 2016 / 2019 (32 bit & 64 bit)
  - Windows 7 / 8 / 10 (32 bit & 64 bit)
  - Windows SBS 2011 (32 bit & 64 bit)
  - Linux RedHat Enterprise AS3 / AS5 / 5 / 8 /9 (32 bit)
  - Linux RedHat Enterprise AS6 (32 bit & 64 bit)
  - Linux Cent OS 5 / 6 / 7 (32 bit & 64 bit)
  - Linux Cent OS 8 (64 bit)
  - Linux Ubuntu 8 / 9 (32 bit)
  - Linux Ubuntu 11 /18 / 19 / 20 (64 bit)
  - Linux Ubuntu 10 / 12 / 14 / 15 / 16 (32 bit & 64 bit)
  - Linux Mint 14.x /19.x (32 bit)
  - Linux Mint 19 / 20 (64 bit)
  - Linux Fedora 5 / 17 (32 bit & 64 bit)
  - Linux Fedora 33 (64 bit)
  - Linux OpenSUSE 10 / 11 / 12 / 13 (32 bit & 64 bit)
  - Linux Debian 6.x / 8.x /10.x (32 bit)

- Linux Debian 6 / 7 / 8 / 10 (64 bit)
- Mac OS 10.6 / 10.7/ 10.8/ 10.9/ 10.10/ 10.11/ 10.12/ 10.13/ 10.14/ 10.15/ 11.0 (64 bit)

## 2-2. Software Install

**Step 1** Insert the software CD into CD ROM. Installation menu will be automatically displayed, or you can run autorun.exe to start the installation in CD directory. Refer to the diagram 2-1.



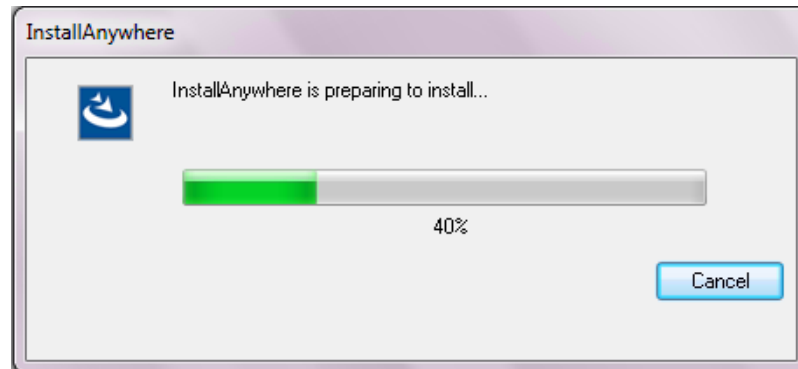
**Diagram 2-1**

**Step 2** It will show the following screen as Diagram 2-2. Then Click "Shutdown Wizard" button to start the installation.



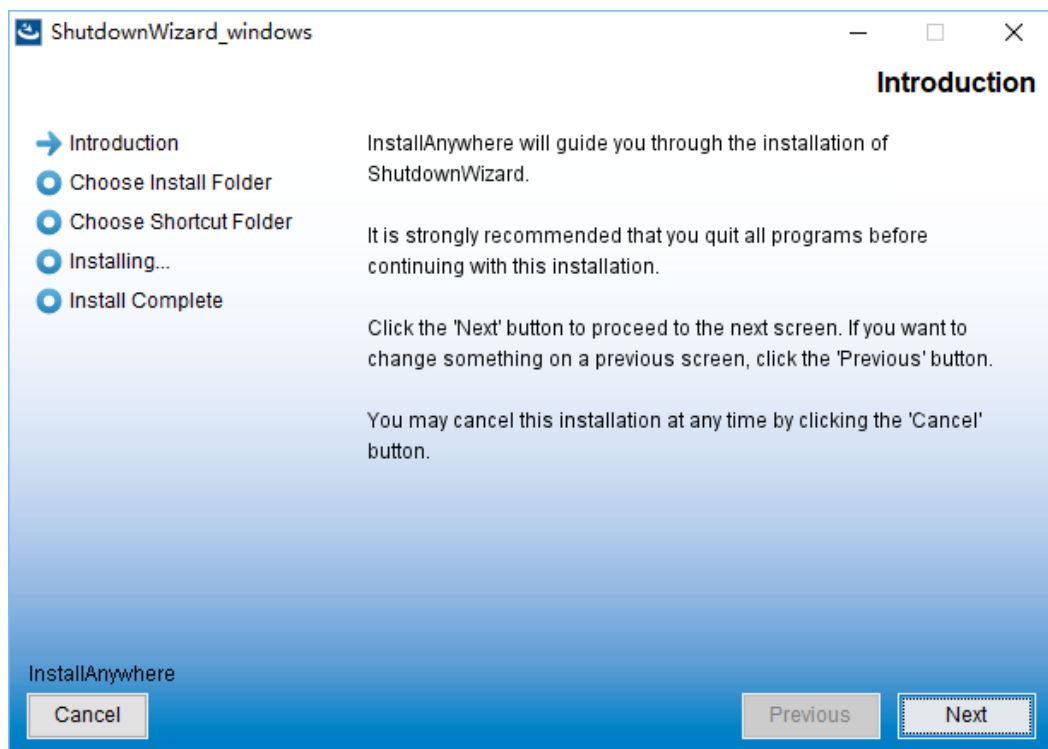
**Diagram 2-2**

**Step 3** After clicking install, it will display the installation in process, Refer to Diagram2-3:



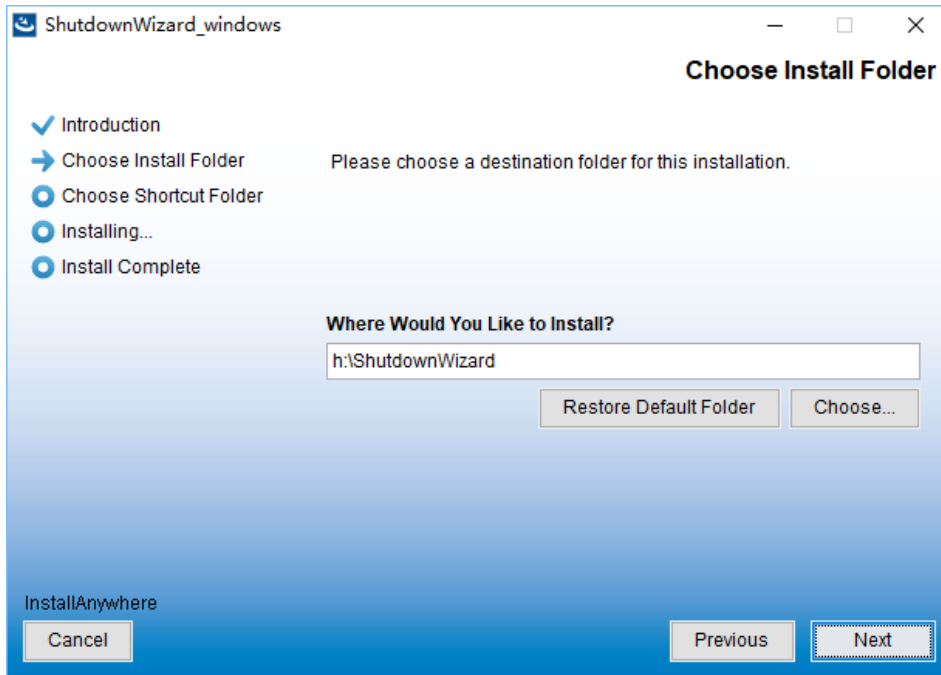
**Diagram 2-3**

**Step 4** Click "Next" to proceed to the next screen as Diagram 2-4



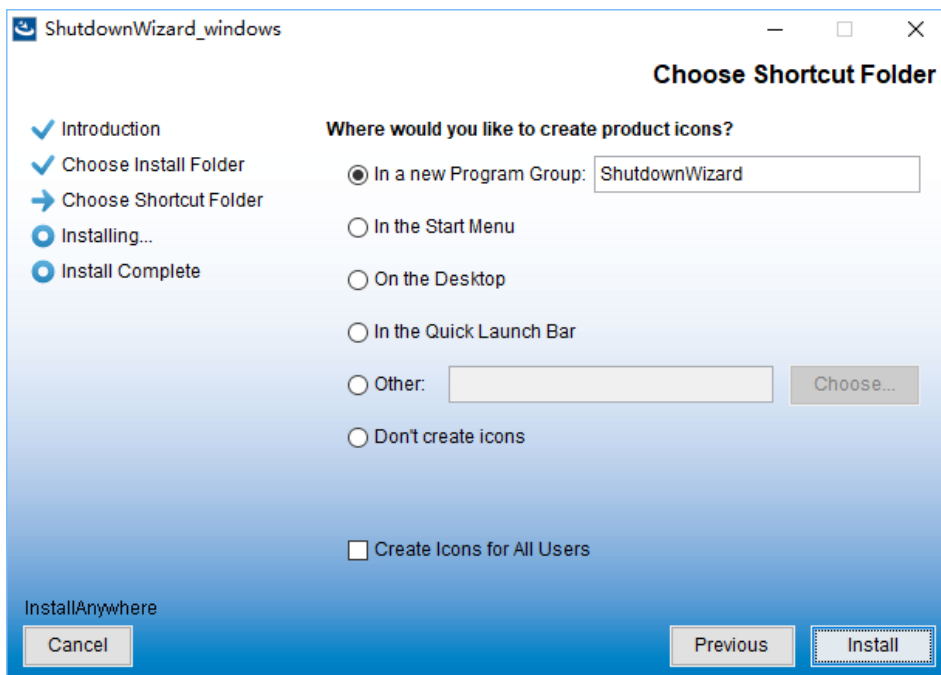
**Diagram 2-4**

**Step 5** Click "Choose" button to change the default folder. After choosing the installed folder, click "Next" button. Refer to the following diagram 2-5.



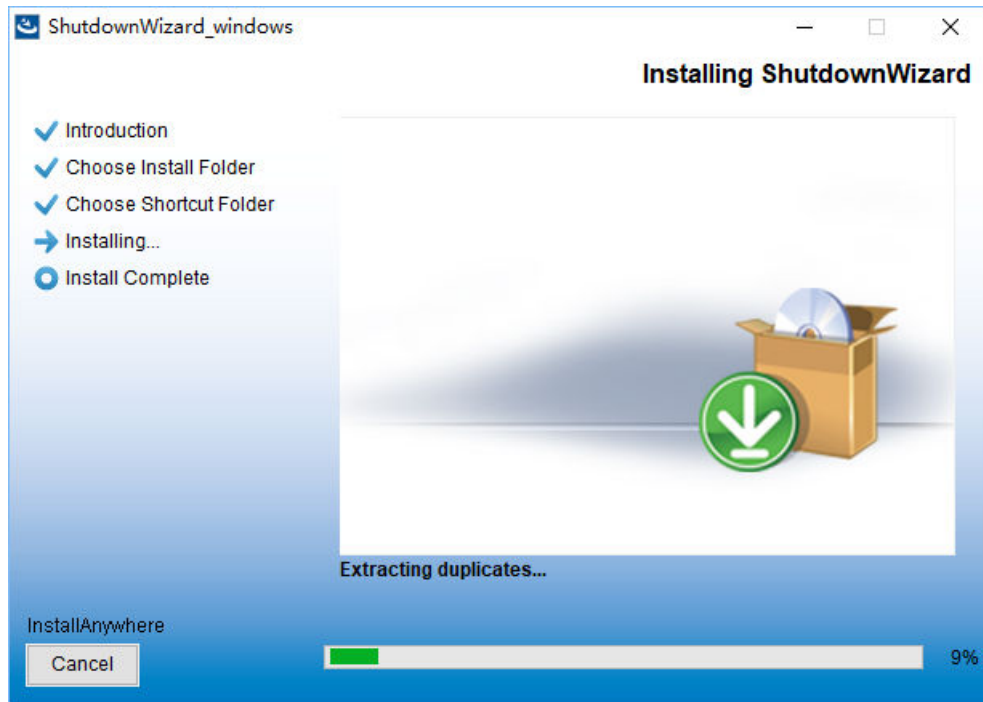
**Diagram 2-5**

**Step 6** Choose the shortcut folder and click "Next" button. Refer to the following diagram 2-6.



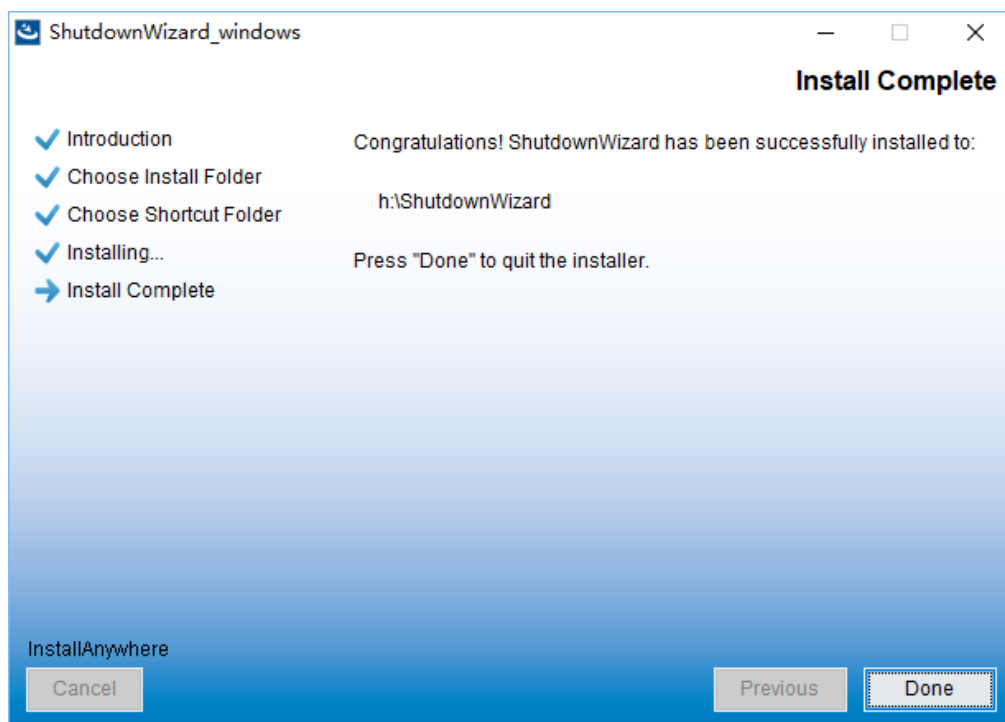
**Diagram 2-6**

**Step 7** Click "Install" button to start the installation and refer to Diagram 2-7



**Diagram 2-7**

**Step 8** Click "Done" button to confirm the installation completely as Diagram 2-8.



**Diagram 2-8**

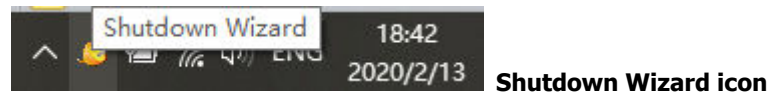
**Step 9** User can see following icon after completion the installation.



**Diagram 2-9**

### 2-3. Start up

Double click the icon or click the start menu with following steps: Start >> All Programs >> Shutdown Wizard >> Shutdown Wizard running program, it will pop out following icon.



**Diagram 2-10a**

For Linux OS without Graphical, user should run the file under the installed folder called "StartConsole", please refer to Diagram 2-10b

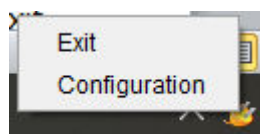
```
leon@ubuntu:~$ cat /etc/issue
Ubuntu 20.04.1 LTS \n \l

leon@ubuntu:~$ ls ShutdownWizard/
autostart.sh  runAutoStart.sh  StartConsole      TEXTMain.lax
config        shutdown          StartConsole.lax  Uninstall_ShutdownWizard
jre           ShutdownWizard   StartShutdown.sh  voice
lax.jar       ShutdownWizard.service  StopConsole
lib           ShutdownWizardService  StopConsole.lax
log          'Shutdown wizard user manual.pdf'  TEXTMain
leon@ubuntu:~$ ./ShutdownWizard/StartConsole
```

**Diagram 2-10b**

### 2-4. Configuration

- 1) Click the right button on the icon of Shutdown Wizard and it will pop up the menu for Configuration. Please refer to Diagram 2-11.



**Diagram 2-11**



2) Then, ShutdownWizard configuration interface will be displayed as shown in Diagram 2-12.

A:

Option	Explanation
Accept shutdown command from remote systems	Only accept instructions from designated IP address Part B is to add designated IP address
Accept the shutdown command from all hosts	Accept instructions from any IP address.

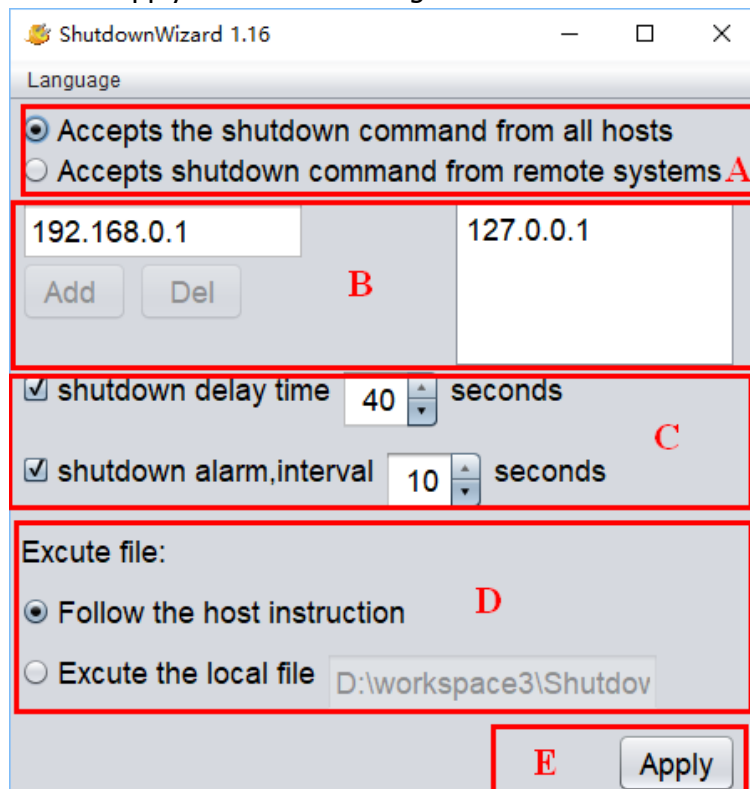
B: Enter IP address in the left side; click "Add" to be added to the right side.

C: This is to set shutdown delay time and the frequency for reminding notification.

D:

Option	Explanation
Follow the host instruction	Execute as the host instructed.
Execute the local file	Execute local script or program.

E: Click Apply to save the changes.



**Diagram 2-12**

## 2-5. Exit

Right click Shutdown Wizard icon, it will pop out the following menu. Please select Exit to close it.

## 2-6. Un-installation

Select Shutdown Wizard >> Uninstaller.exe. It will pop out the un-installation icon to indicate steps on un-installation.

### 3. Shut down the system

This shutdown wizard can execute shutdown command by integrating with ViewPower, ViewPower Pro or SNMP Web Pro. All shutdown procedures will be described in this chapter based on different software.

#### 3-1. Integrated with ViewPower.

Open ViewPower software and click UPS MENU→UPS settings→Remote shutdown as shown in Diagram 3-1.

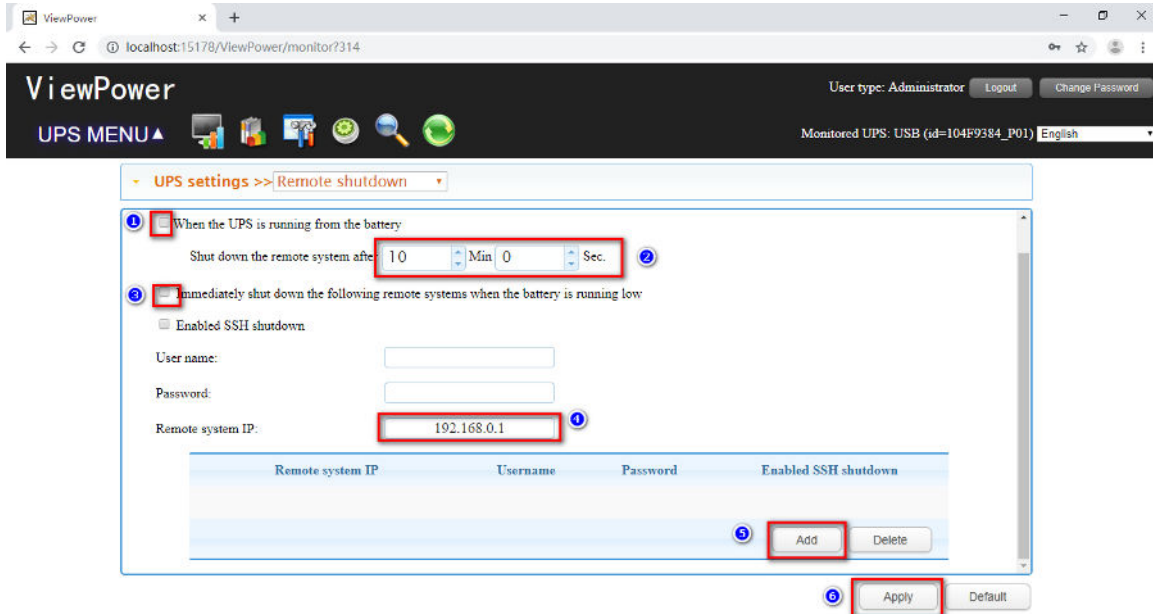


Diagram 3-1

There are two shutdown selections to choose.

- When the UPS is running from the battery: If selected, the UPS will remotely shut down the system when entering battery mode. In remark 2, enter the delay time for shutting down the system.
- Immediately shut down the following remote systems when the battery is running low: If selected, the UPS will remotely shut down the system when the battery is in low battery status.

After select shutdown method, be sure to enter IP address of remote PC in remark 4 and click "Add" button to add IP address. Then, click "Apply" button to save all settings.

The UPS will execute shutdown command based on your setting.

### 3-2. Integrated with ViewPower Pro

Open ViewPower Pro software and click Configuration→Load configuration as shown in Diagram 3-2.

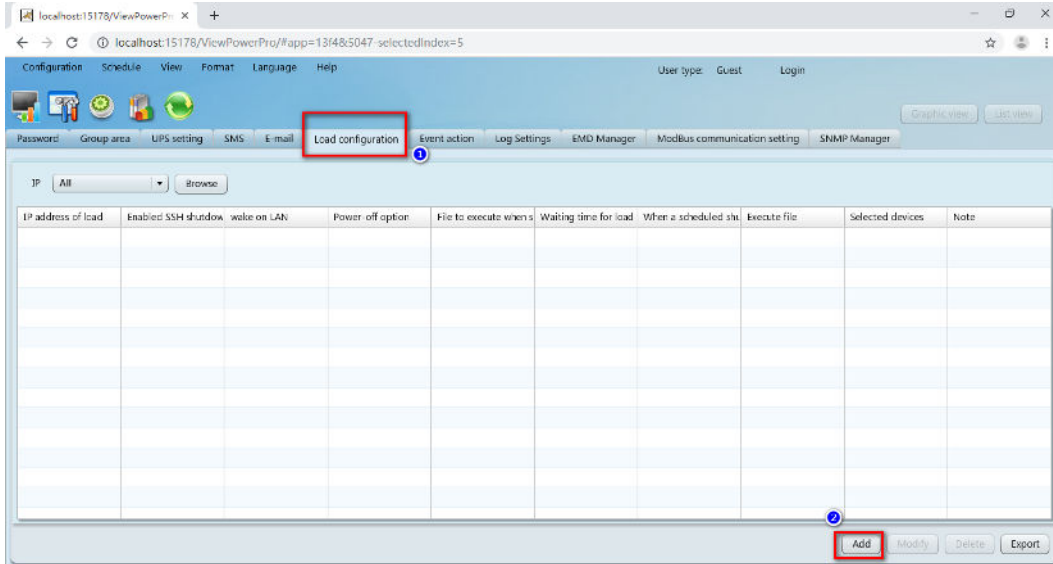


Diagram 3-2

Click "Add" button and it will pop up a message screen as shown in Diagram 3-3. Enter IP address of shutdown PC in remark 1 and waiting time to send shutdown command in remark 2. Then, choose selected UPSs in remark 3. When selected event occurs (check the following section for Event Action setting) on selected UPSs (in remark 3), ViewPower Pro software will send shutdown command to shutdown PC in remark 1. Click "Apply" button to save all settings.

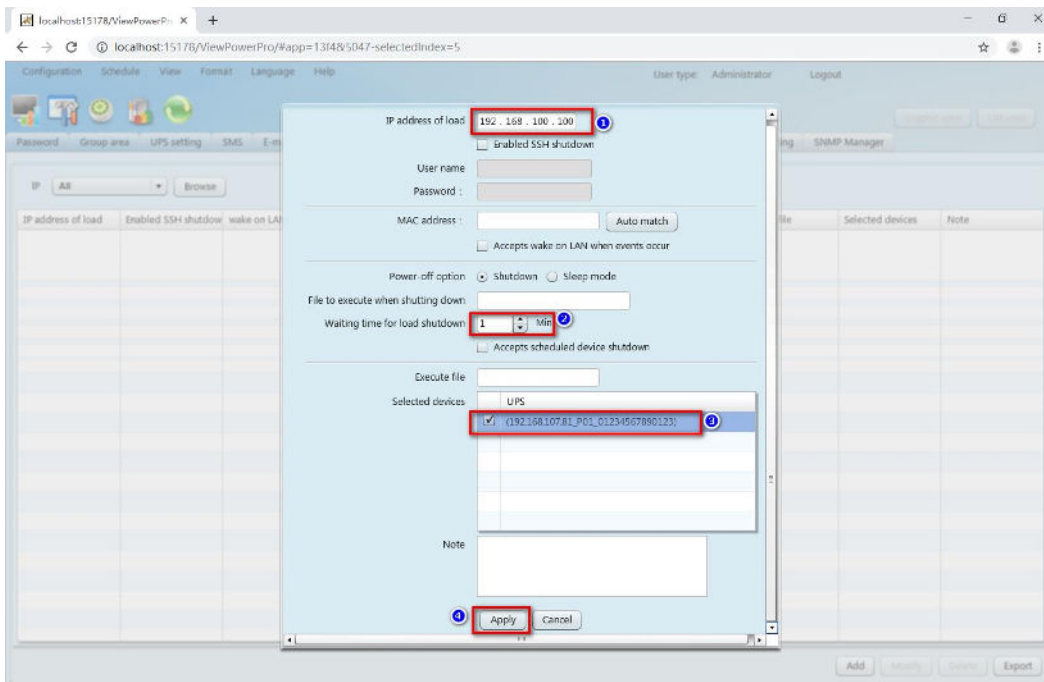
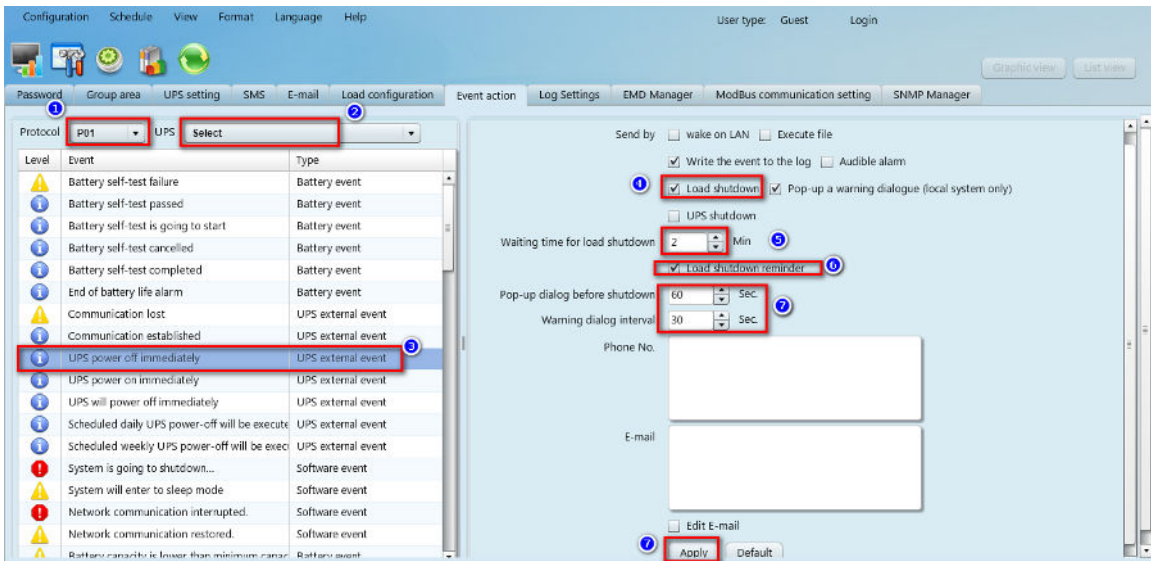


Diagram 3-3

Then, click “Event Action” webpage as shown in Diagram 3-4. Follow below steps to configure “Event Action”.



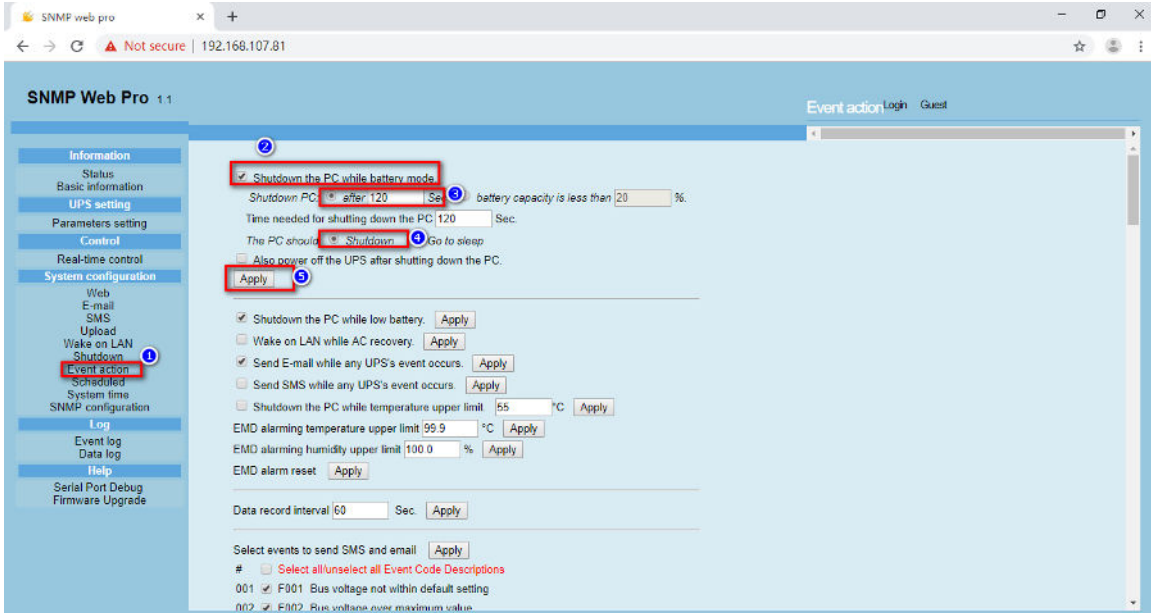
**Diagram 3-4**

- 1). Select setting Protocol in remark 1.
- 2). Select UPS name from remark 2.
- 3). Select one event from event list as shown in remark 3.
- 4). Click the checkbox of Load shutdown in remark 4.
- 5). Enter waiting time in remark 5.
- 6). You may choose shutdown reminder in remark 6. If clicked, be sure to enter setting timer for pop-up dialog and warning interval in remark 7.
- 7). Then, click “Apply” button to save all settings.

**NOTE:** The total system waiting time is the sum of setting time (waiting time to send shutdown command) in remark 2 of diagram 3-3 and setting time (waiting time after receiving shutdown command) in remark 5 in diagram 3-4.

### 3-3. Integrated with SNMP Web Pro

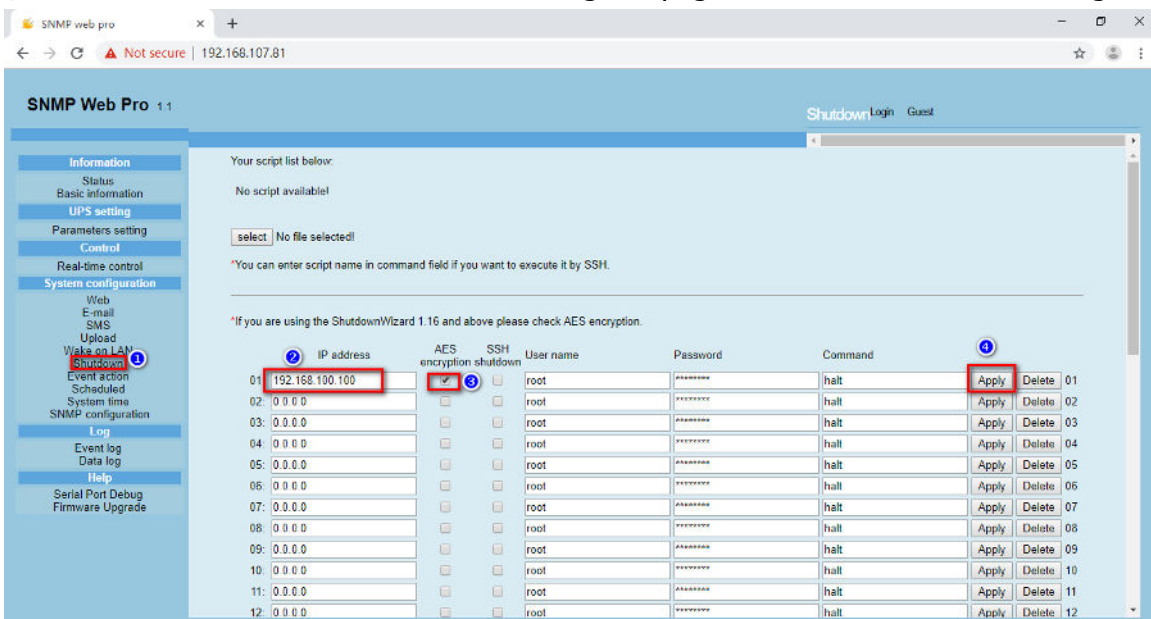
Open SNMP Web Pro software and click "Event Action" as shown in Diagram 3-5. Follow below steps to configure "Event Action".



**Diagram 3-5**

- 1) Click checkbox of shutdown the PC while battery mode in remark 2.
- 2) Enter waiting time for shutdown PC in remark 3.
- 3) Select "Shutdown" in remark 4.
- 4) Then, click "Apply" button to save all settings.

Then, click "Shutdown" to access shutdown setting webpage as shown in remark 1 of Diagram 3-6.



**Diagram 3-6**

- 1) Enter IP address of shutdown PC in remark 2.
- 2) Click checkbox of AES encryption in remark 3.
- 3) Click "Apply" button to save all settings.

After all these configurations, when selected UPS enters battery mode, it will wait the setting time to send shutdown command to selected PC.

### 3-4 Linux non-root user password setting

#### A · GUI

- 1) When running the application, a menu will appear on the desktop, please click on "Password". Please refer to Diagram 3-6a.
- 2) Please enter the system password and click "Apply", shutdown command will be executed in the pop-up window. Please refer to Diagram 3-7b.

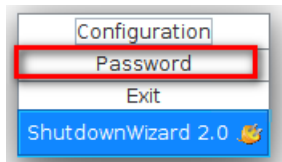


Diagram 3-7a

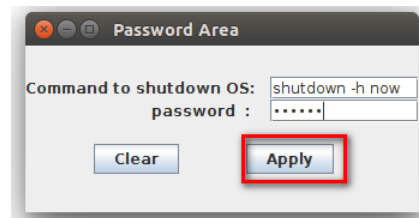


Diagram 3-7b

#### B · CLI

Please run TEXTMain under the installation path and add two parameters after it. The first parameter is the system password and the second parameter is the system shutdown command. (If the parameter contains special characters or spaces, please add quotation marks). Please refer to Diagram 3-8.

```
@ubuntu:~/ShutdownWizard$ ls
autostart.sh  shutdown          StopConsole
config        ShutdownWizard   StopConsole.lax
jre           ShutdownWizard.service TEXTMain
lax.jar       ShutdownWizardService TEXTMain.lax
log           StartConsole     uninstall.ShutdownWizard
Log           StartConsole.lax voice
runAutoStart.sh StartShutdown.sh
```

```
@ubuntu:~/ShutdownWizard$ '/home/ /ShutdownWizard/TEXTMain' password "shutdown -h now"
```

Diagram 3-8